

Instrument Key:

	ETC Source 4 10deg @575 W	1
	ETC Source 4 19deg @575 W	3
	ETC Source 4 36deg @750 W	7
	ETC Source 4 50deg @750 W	2
	ETC Source 4 Jr Zoom @575 W	6
	ETC Source4 LED2LS 36deg @171 W	9
	ETC Source 4 LED Series 3 Lustr X8 36° @307 W	4
	ETC Source4 Fresnel @750 W	10
	ETC Source 4 CE PAR MCM (MFL) @575 W	10
	Clay Paky ALEDA B EYE K10 @0 W	4
	Miro Cube 4C @0 W	13
	Miro Cube UV @0 W	4
	UV Lights	3
	ChromaQ Colorforce II 72 @800 W	1
	Edison Bulb	24
	Chandelier	1

Cabling Symbol Key

- Dimmer Power Line
- Edison Line
- DMX Line
- Power-Con
- Two-Fer
- Edison Tri-Tap
- * Callouts Indicate Presence of Adapters/Connector Types

Sprinkler System Room



- ### Notes
- Circuiting per Production Electrician.
 - No substitutions without designers approval.
 - Refer to hookup for additional color, gobo, accessory, and moving light mode information.
 - Atmosphere, and floor mounted units to be placed by designer at time of focus.
 - Please have generous cuts of R100, R114, R119, and R132 available in all appropriate sizes at time of focus.
 - All fixtures to receive safety cables.
 - Except where noted, all fixtures to be hung with 18" minimum spacing with appropriate focus slack on cabling.
 - Channels 40-45, 91-100, 104 to be hanging from the Grid. Trim heights to be determined by the designers and communicated to the Electrics Shop.
 - Please put Homogenizers in all Lustr 2s and 3s.
 - Please add Heat Shield to all Source4 PARs.

Label Legend

This Drawing Represents Design Intent and Concept

The lighting designers are responsible for visual aspects of the production only and all specifications provide relate solely to the appearance of the lighting and not to matters of electrical or structural soundness and/or safety. The implementation of this design must comply with the most stringent applicable federal and local safety fire codes. The designer is not qualified to determine electrical or structural appropriateness of the design and will not assume responsibility for damages resulting through improper engineering and/or implementation in the handling of the elements of the lighting design. The designer agrees to make prompt correcting alterations to any specification found to be incompatible with proper safety precautions.

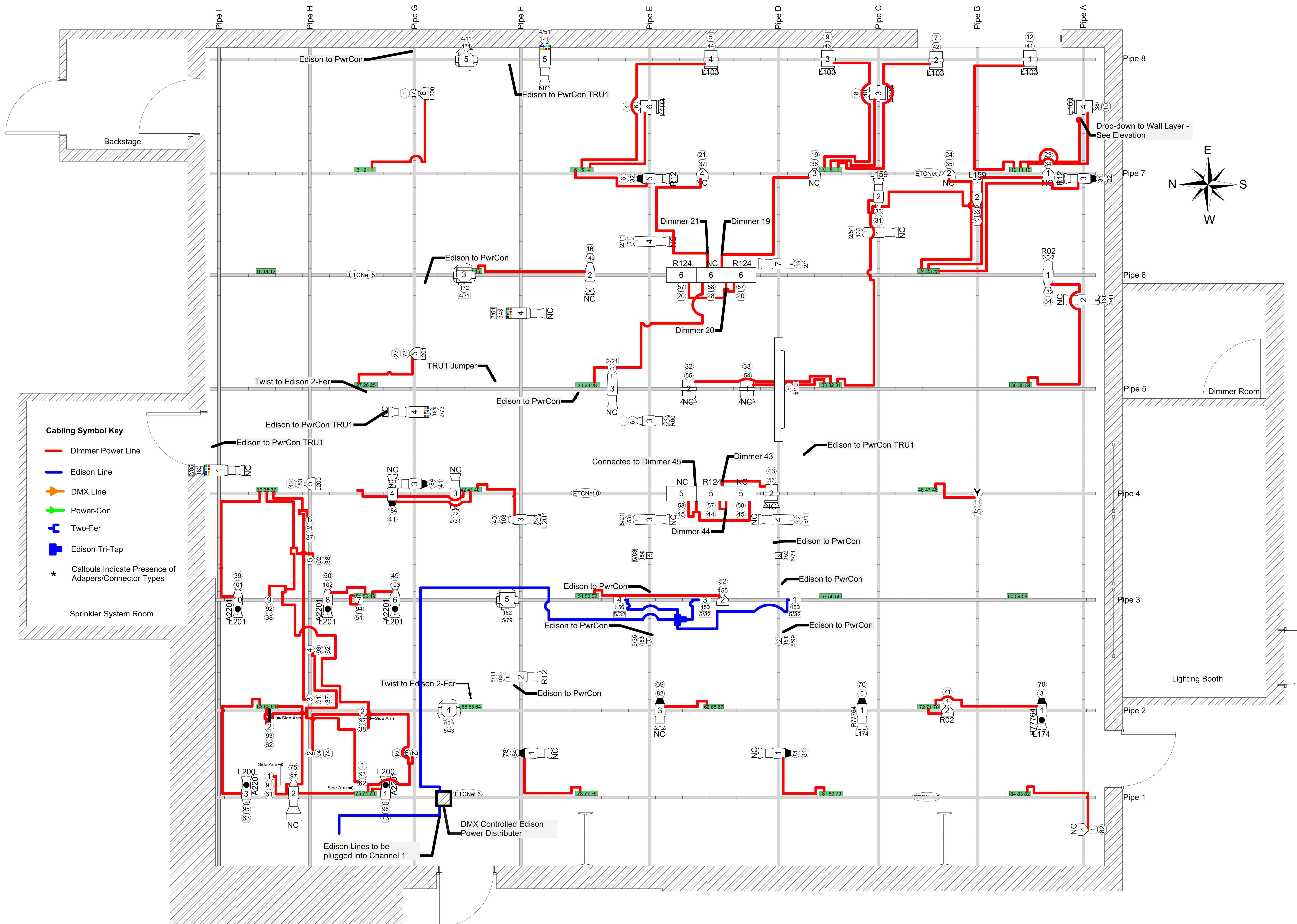
Signature: _____



Production Team

Director: Saffron Henke
Lighting Designers: Ava Barbieri, Koryn McManus, Abby Sumner
Production Electrician: Ayden Edgar
Lighting Supervisor: Tate Sanders

13 Wall/Ground Cabling - All
 Scale: 3/8" = 1'-0"



Cabling Symbol Key

- Dimmer Power Line
- Edison Line
- DMX Line
- Power-Con
- Two-Fer
- Edison Tri-Tap

* Callouts Indicate Presence of Adapters/Connector Types

Sprinkler System Room

Instrument Key:	
	ETC Source 4 10deg @575 W 1
	ETC Source 4 19deg @575 W 3
	ETC Source 4 36deg @750 W 7
	ETC Source 4 50deg @750 W 2
	ETC Source 4 Jr Zoom @575 W 6
	ETC Source4 LED2LS 36deg @171 W 9
	ETC Source 4 LED Series 3 Lustr X8 36° @307 W 4
	ETC Source4 Fresnel @750 W 10
	ETC Source 4 CE PAR MCM (MFL) @575 W 10
	Clay Paky ALEDA B EYE K10 @0 W 4
	Miro Cube 4C @0 W 13
	Miro Cube UV @0 W 4
	UV Lights 3
	ChromaQ Colorforce II 72 @800 W 1
	Edison Bulb 24
	Chandelier 1

CHERRYFIELD TOY COMPANY

- Notes**
- Circuited per Production Electrician.
 - No substitutions without designers approval.
 - Refer to hookup for additional color, gobo, accessory, and moving light mode information.
 - Atmosphere, and floor mounted units to be placed by designer at time of focus.
 - Please have generous cuts of R100, R114, R119, and R132 available in all appropriate sizes at time of focus.
 - All fixtures to receive safety cables.
 - Except where noted, all fixtures to be hung with 18" minimum spacing with appropriate focus slack on cabling.
 - Channels 40-45, 91-100, 104 to be hanging from the Grid. Trim heights to be determined by the designers and communicated to the Electric Shop.
 - Please put Homogenizers in all Lustr 2s and 3s.
 - Please add Heat Shield to all Source4 PARs.

Label Legend

This Drawing Represents Design Intent and Concept

The lighting designers are responsible for visual aspects of the production only and all specifications provide relate solely to the appearance of the lighting and not to matters of electrical or structural soundness and/or safety. The implementation of this design must comply with the most stringent applicable federal and local safety codes. The designer is not qualified to determine electrical or structural appropriateness of the design and will not assume responsibility for damages resulting through improper engineering and/or implementation in the handling of the elements of the lighting design. The designer agrees to make prompt correcting alterations to any specification found to be incompatible with proper safety precautions.

Signature: _____

COLORADO STATE UNIVERSITY

Production Team

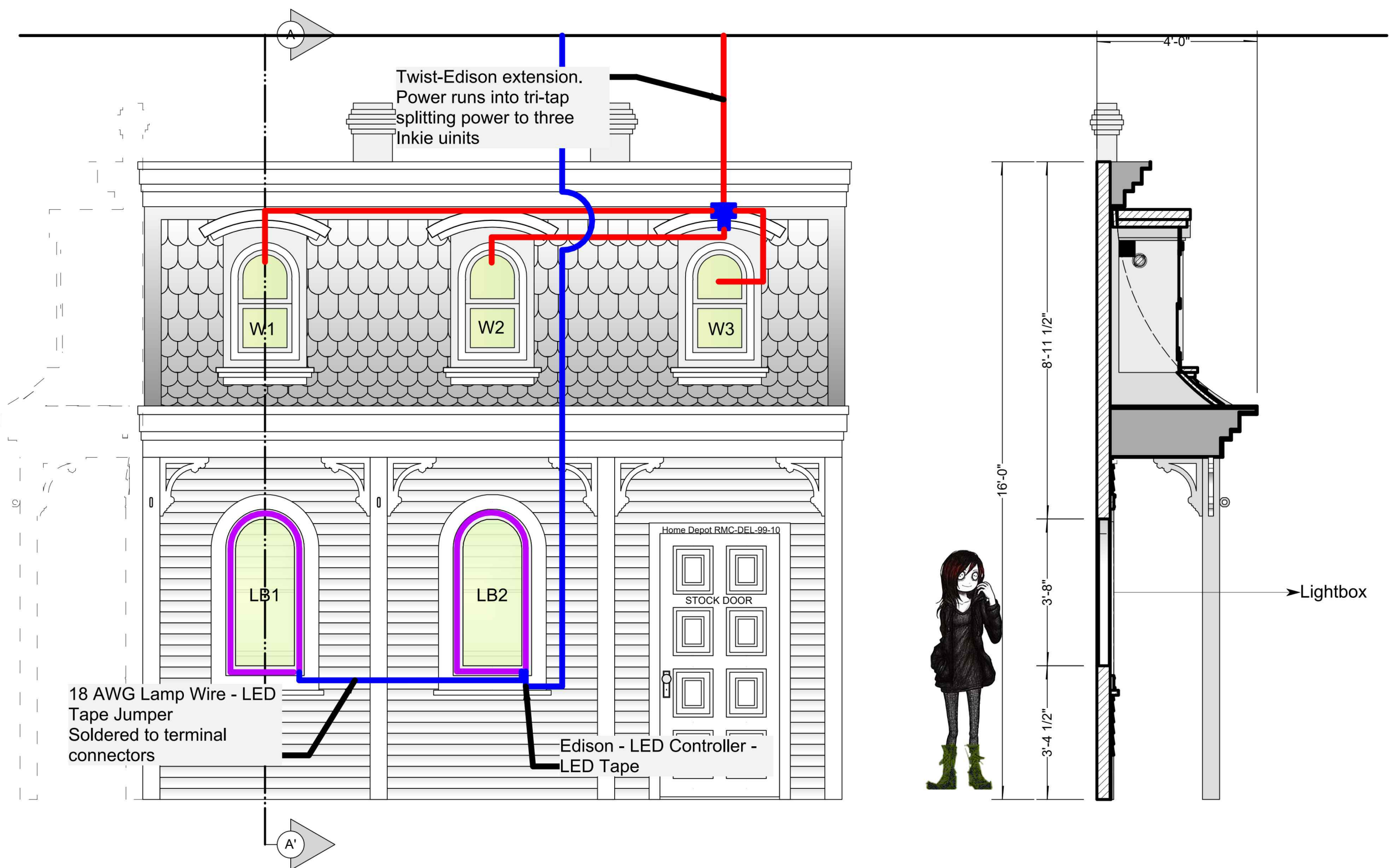
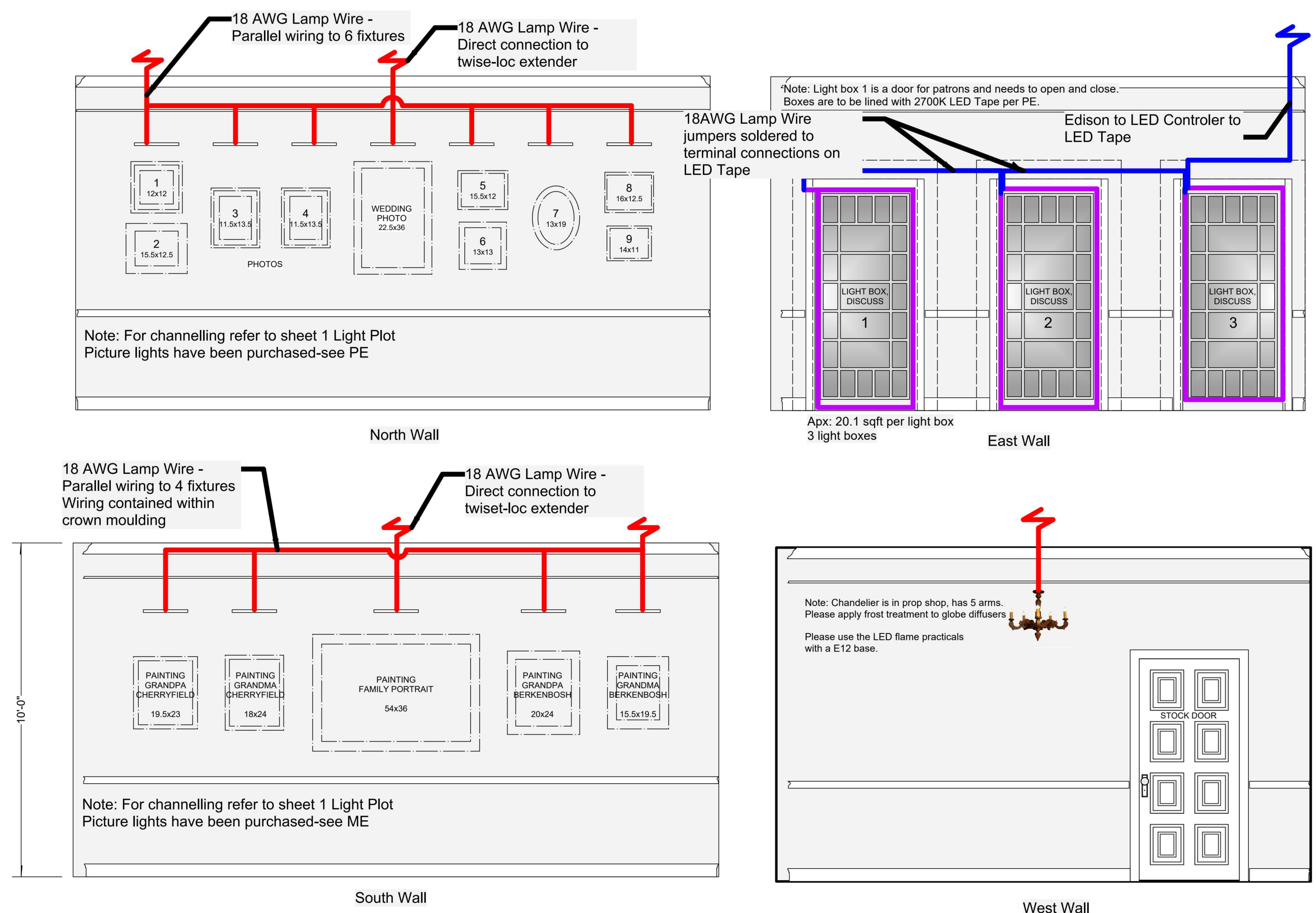
Director: Saffron Henke

Lighting Designers: Ava Barbieri, Koryn McManus, Abby Sumner

Production Electrician: Ayden Edgar

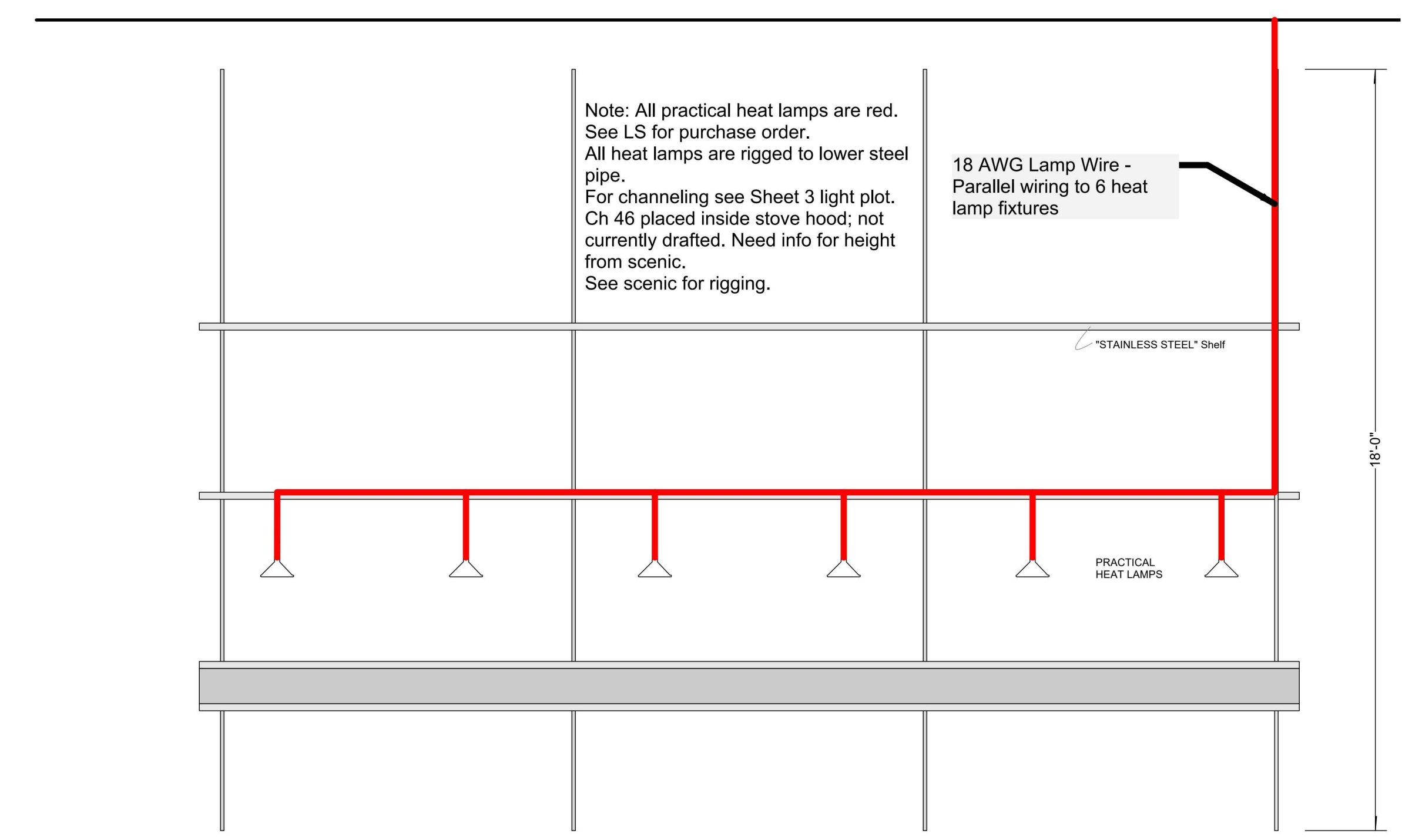
Lighting Supervisor: Tate Sanders

14 Grid Cabling - Dimmer
Scale: 3/8" = 1'-0"

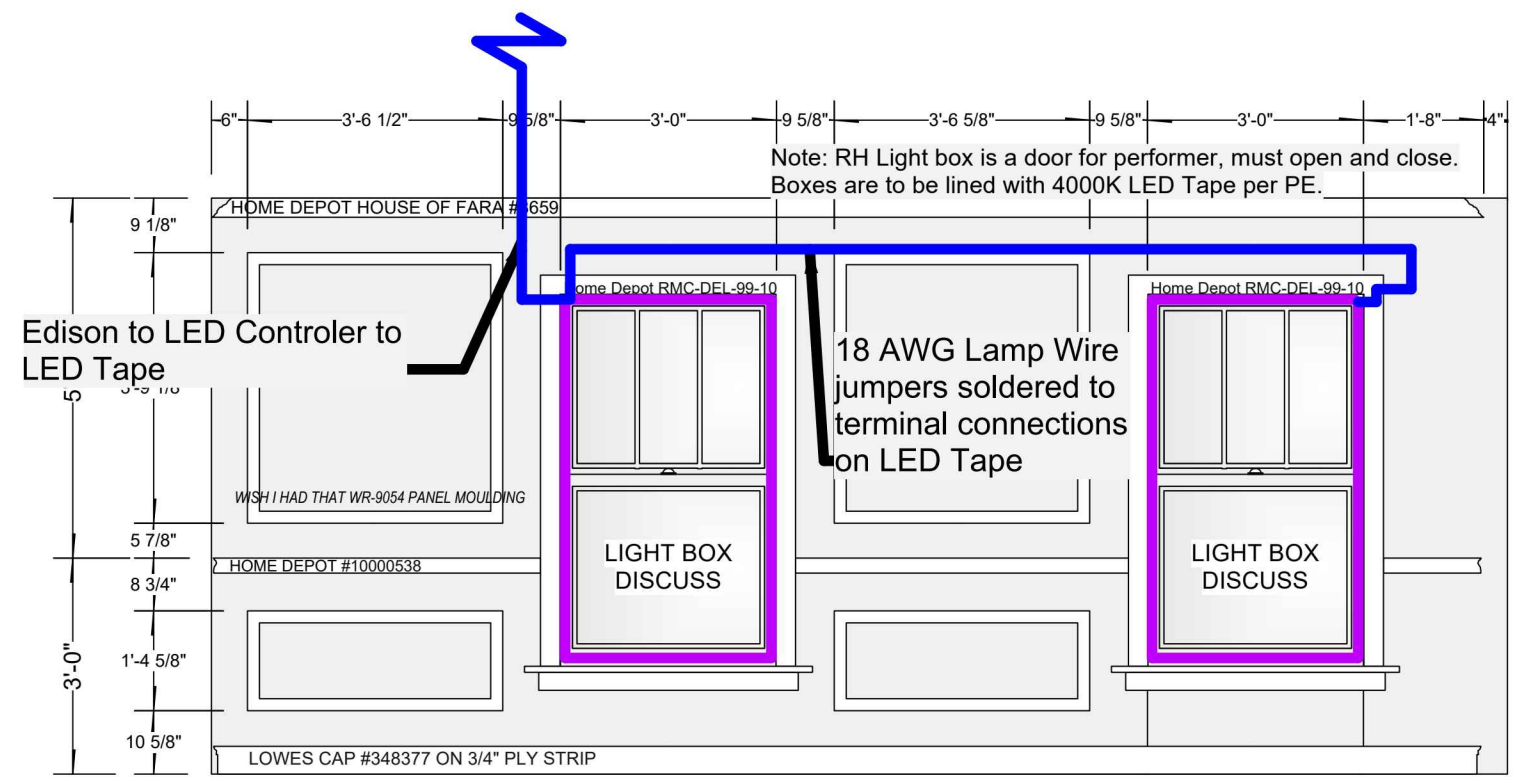


25 Backyard - Wiring Elevation
Scale: 3/8" = 1'-0"

23 Dining Room - Wiring Elevations
Scale: 3/8" = 1'-0"



24 Kitchen - Wiring Elevation
Scale: 3/8" = 1'-0"



26 Bedroom - Wiring Elevation
Scale: 3/8" = 1'-0"

- Cabling Symbol Key**
- Dimmer Power Line
 - Edison Line
 - DMX Line
 - Power-Con
 - Two-Fer
 - Edison Tri-Tap
 - * Callouts Indicate Presence of Adapters/Connector Types



- Notes**
- Circuiting per Production Electrician.
 - No substitutions without designers approval.
 - Refer to hookup for additional color, gobo, accessory, and moving light mode information.
 - Atmosphere, and floor mounted units to be placed by designer at time of focus.
 - Please have generous cuts of R100, R114, R119, and R132 available in all appropriate sizes at time of focus.
 - All fixtures to receive safety cables.
 - Except where noted, all fixtures to be hung with 18" minimum spacing with appropriate focus slack on cabling.
 - Channels 40-45, 91-100, 104 to be hanging from the Grid. Trim heights to be determined by the designers and communicated to the Electrics Shop.
 - Please put Homogenizers in all Lustr 2s and 3s.
 - Please add Heat Shield to all Source4 PARs.

Label Legend

This Drawing Represents Design Intent and Concept

The lighting designers are responsible for visual aspects of the production only and all specifications provide relate solely to the appearance of the lighting and not to matters of electrical or structural soundness and/or safety. The implementation of this design must comply with the most stringent applicable federal and local safety fire codes. The designer is not qualified to determine electrical or structural appropriateness of the design and will not assume responsibility for damages resulting through improper engineering and/or implementation in the handling of the elements of the lighting design. The designer agrees to make prompt correcting alterations to any specification found to be incompatible with proper safety precautions.

Signature: _____



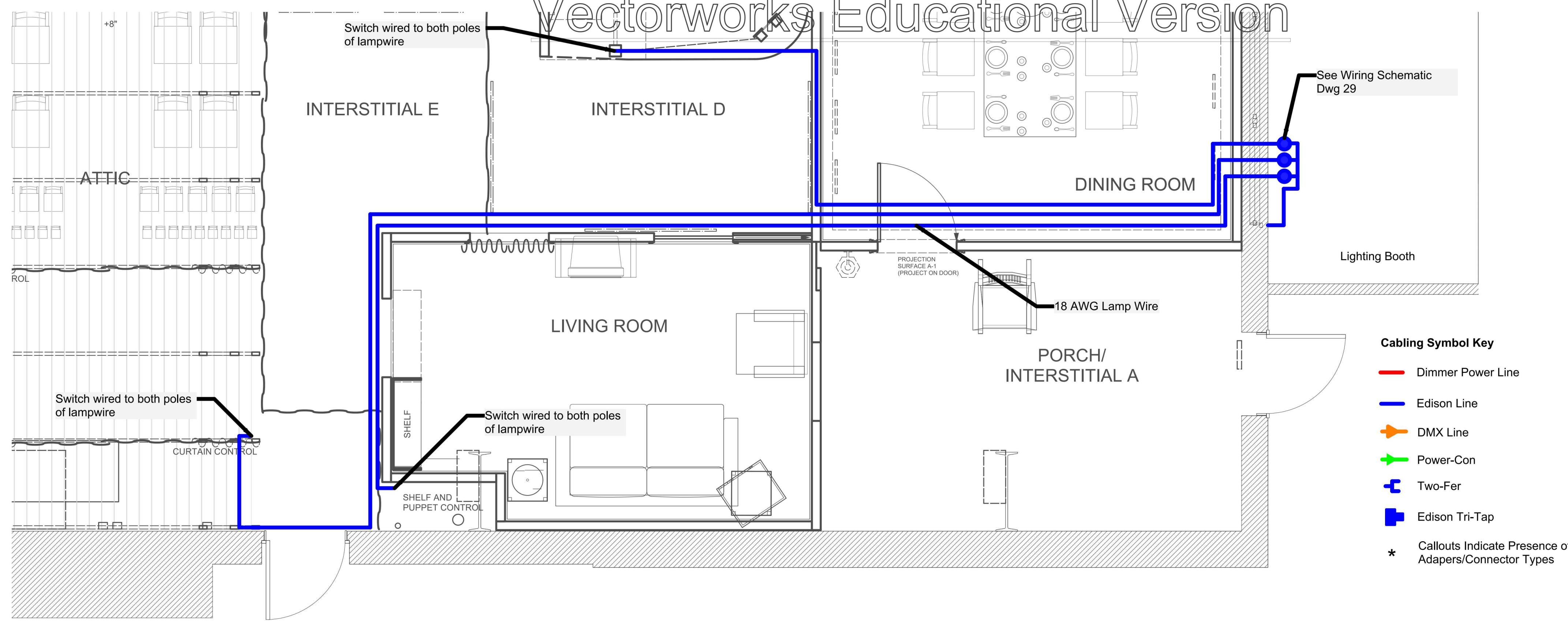
Production Team

Director: Saffron Henke

Lighting Designers: Ava Barbieri, Koryn McManus, Abby Sumner

Production Electrician: Ayden Edgar

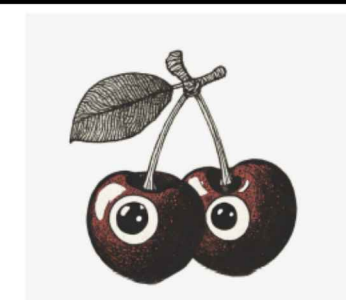
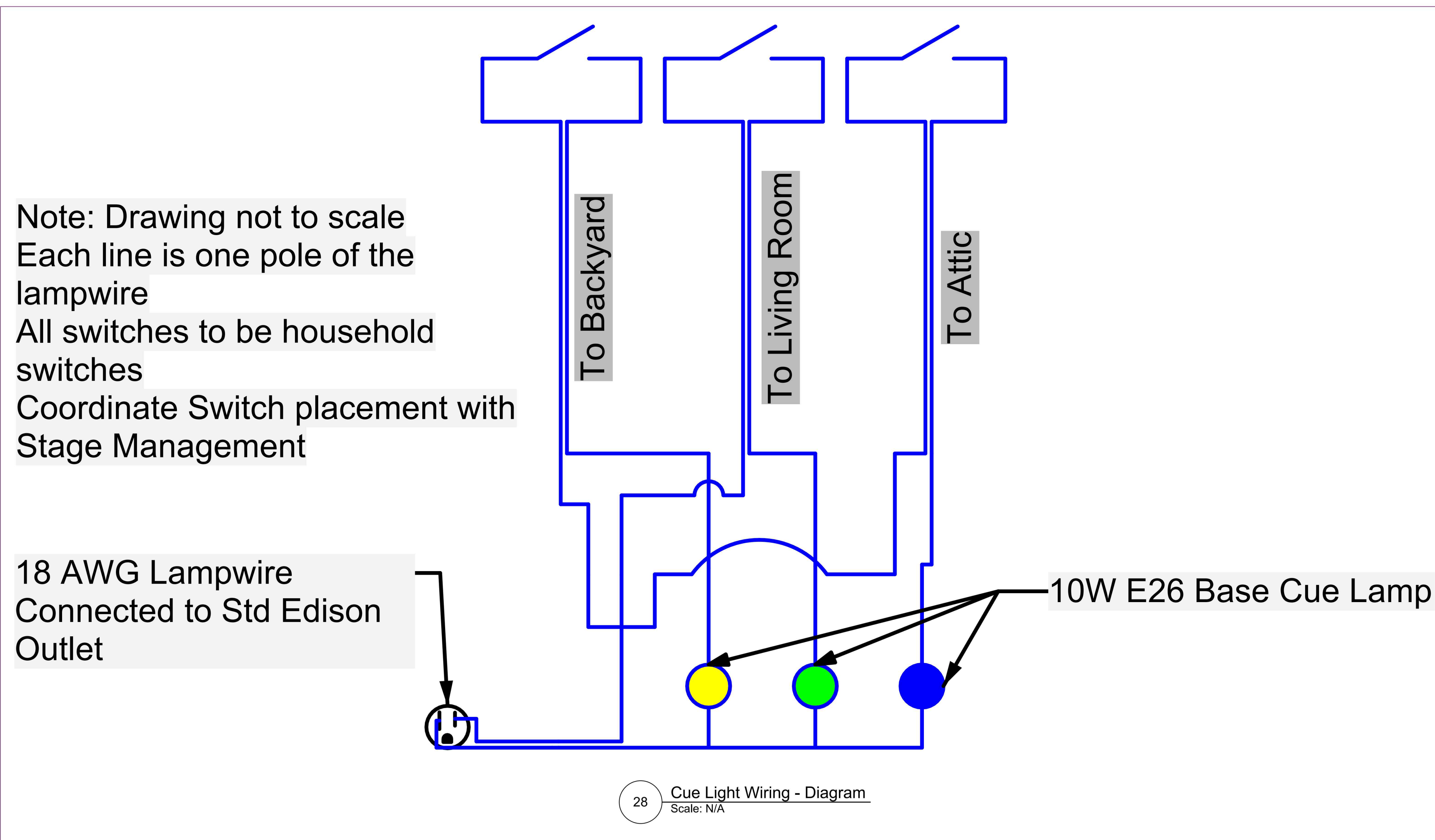
Lighting Supervisor: Tate Sanders



27 Cue Light Wiring - Plan
Scale: 3/8" = 1'-0"

Instrument Key:

	ETC Source 4 10deg	1
	ETC Source 4 19deg	4
	ETC Source 4 36deg	9
	ETC Source 4 50deg	2
	ETC Source 4 Jr Zoom	7
	ETC Source4 LED2LS 36deg	9
	ETC Source 4 LED Series 3 Lustr X8 36°	4
	ETC Source4 Fresnel	10
	ETC Source 4 CE PAR MCM (MFL)	10
	Clay Paky ALEDA B EYE K10	4
	Miro Cube 4C	11
	Miro Cube UV	4
	UV Lights	3
	ChromaQ Colorforce II 72	1
	Edison Bulb	12
	Chandelier	1

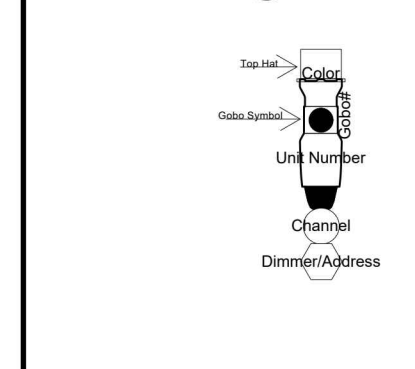


CHERRYFIELD TOY COMPANY

Notes

- Circuiting per Production Electrician.
- No substitutions without designers approval.
- Refer to hookup for additional color, gobo, accessory, and moving light mode information.
- Atmosphere, and floor mounted unites to be placed by designer at time of focus.
- Please have generous cuts of R100, R114, R119, and R132 available in all appropriate sizes at time of focus.
- All fixtures to receive safety cables.
- Except where noted, all fixtures to be hung with 18" minimum spacing with appropriate focus slack on cabling.
- Channels 40-45, 91-100, 104 to be hanging from the Grid. Trim heights to be determined by the designers and communicated to the Electric Shop.
- Please put Homogenizers in all Lustr 2s and 3s.
- Please add Heat Shield to all Source4 PARs.

Label Legend



This Drawing Represents Design Intent and Concept

The lighting designers are responsible for visual aspects of the production only and all specifications provide relate solely to the appearance of the lighting and not to matters of electrical or structural soundness and/or safety. The implementation of this design must comply with the most stringent applicable federal and local safety fire codes. The designer is not qualified to determine electrical or structural appropriateness of the design and will not assume responsibility for damages resulting through improper engineering and/or implementation in the handling of the elements of the lighting design. The designer agrees to make prompt correcting alterations to any specification found to be incompatible with proper safety precautions.

Signature: _____



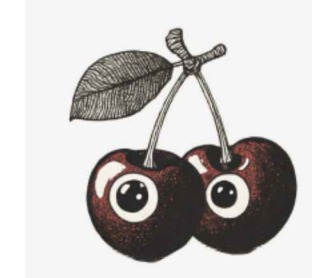
Production Team

Director: Saffron Henke
Lighting Designers: Ava Barbieri, Koryn McManus, Abby Sumner
Production Electrician: Ayden Edgar
Lighting Supervisor: Tate Sanders

The Cherryfield Toy Company LX Dimmer Load Sheet <i>*Loads Subject to Change per Production Electrician*</i>							
Dimmer	Proj. Load (w)	Dimmer	Proj. Load (w)	Dimmer	Proj. Load (w)	Dimmer	Proj. Load (w)
1	575	2	0	49	575	50	575
3	60	4	750	51	60	52	575
5	750	6	750	53	0	54	0
7	750	8	750	55	0	56	0
9	750	10	750	57	0	58	120
11	600	12	750	59	30	60	60
*13	1545	*14	1545	61	60	62	180
15	0	16	575	63	575	64	0
*17	625	*18	425	65	1371	66	356
19	575	20	2000	67	713	68	800
21	575	22	750	69	750	70	1500
23	575	24	575	71	575	72	0
25	1776	26	1507	73	575	74	120
27	575	28	1000	75	575	76	0
29	80	30	300	77	0	78	750
31	1150	32	750	*79	400	*80	1282
33	750	34	575	81	750	82	575
35	180	36	0	83	0	84	0
37	120	38	180	85	100	86	200
39	575	40	575	87	200	88	0
41	1500	42	575	89	50	*90	1050
43	750	44	1000	91	100	92	400
45	2000	46	100	93	0	94	0
47	30	48	180	95	0	96	0
Does Not Resemble Physical Rack				##	CC20 Module	*##	Proj. Circuit

The Cherryfield Toy Company NetPort Patch			
Net Port	Universe	Net Port	Universe
Net 1	NONE	Net 6	UNI 5
Net 2	UNI 6	Net 7	UNI 3
Net 3	CONSOLE	Net 8	UNI 2
Net 4	NONE	Net 9	NONE
Net 5	UNI 4	Net 10	Uni. 1 DIMMER RACK

Instrument Key:		
	ETC Source 4 10deg	1
	ETC Source 4 19deg	4
	ETC Source 4 36deg	9
	ETC Source 4 50deg	2
	ETC Source 4 Jr Zoom	7
	ETC Source4 LED2LS 36deg	9
	ETC Source 4 LED Series 3 Lustr X8 36°	4
	ETC Source4 Fresnel	10
	ETC Source 4 CE PAR MCM (MFL)	10
	Clay Paky ALEDA B EYE K10	4
	Miro Cube 4C	11
	Miro Cube UV	4
	UV Lights	3
	ChromaQ Colorforce II 72	1
	Edison Bulb	12
	Chandelier	1

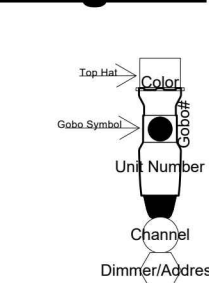


CHERRYFIELD TOY COMPANY

Notes

- Circuiting per Production Electrician.
- No substitutions without designers approval.
- Refer to hookup for additional color, gobo, accessory, and moving light mode information.
- Atmosphere, and floor mounted unites to be placed by designer at time of focus.
- Please have generous cuts of R100, R114, R119, and R132 available in all appropriate sizes at time of focus.
- All fixtures to receive safety cables.
- Except where noted, all fixtures to be hung with 18" minimum spacing with appropriate focus slack on cabling.
- Channels 40-45, 91-100, 104 to be hanging from the Grid. Trim heights to be determined by the designers and communicated to the Electric Shop.
- Please put Homogenizers in all Lustr 2s and 3s.
- Please add Heat Shield to all Source4 PARs.

Label Legend



This Drawing Represents Design Intent and Concept

The lighting designers are responsible for visual aspects of the production only and all specifications provide relate solely to the appearance of the lighting and not to matters of electrical or structural soundness and/or safety. The implementation of this design must comply with the most stringent applicable federal and local safety fire codes. The designer is not qualified to determine electrical or structural appropriateness of the design and will not assume responsibility for damages resulting through improper engineering and/or implementation in the handling of the elements of the lighting design. The designer agrees to make prompt correcting alterations to any specification found to be incompatible with proper safety precautions.

Signature: _____



Production Team

Director: Saffron Henke
Lighting Designers: Ava Barbieri, Koryn McManus, Abby Sumner
Production Electrician: Ayden Edgar
Lighting Supervisor: Tate Sanders