

- SYMBOL KEY**
- ETC Source 4 26° @ 750W
  - ETC Source 4 36° @ 750W
  - ETC Source 4 50° @ 750W
  - ETC Source 4 70° @ 575W
  - ETC Source 4 PAR NSP @ 750W
  - ETC Source 4 PAR MFL @ 750W
  - ETC Source 4 PAR WFL @ 750W
  - Altman 3 Cell Cyc @ 1000W/ea
  - ETC S4 Lustr2DS 19°
  - ETC S4 Lustr2DS 26°
  - ETC S4 Lustr2DS 36°
  - ETC S4 Lustr2DS 50°
  - ETC S4 Lustr3 X8 10°
  - ETC S4 Lustr3 X8 14°
  - Clay Paky A.leda B-Eye K10
  - Clay Paky A.leda B-Eye K20
  - Clay Paky AlphaSpot 300 HPE
  - MDG Atmosphere
  - Pendant ST64 Fixture @ 60W

**LEGEND:**

**REVISIONS:**

NO.	Date	Note
A	11/10/2025	PRELIMINARY PLOT
B	11/15/2025	PRELIMINARY REVISIONS
C	12/8/2025	DESIGNER FINAL DRAWINGS
D	1/23/2026	ASSOCIATE ADJUSTMENTS AND TRANSFER
E	2/10/2026	UPDATES FROM FOCUS
F	4/09/2026	POST-PRODUCTION UPDATES - FINAL

**NOTES:**

- DIMMER, NETWORKING, AND POWER AS PER LIGHTING SUPERVISOR.
- SEE HOOKUP FOR ACCESSORIES, COLOR, AND FROST.
- PLEASE HAVE EXCESS CUTS OF R119 AT FOCUS.
- PLEASE PROVIDE ALL COLOR, FROST AND TEXTURE AT FOCUS.
- PLEASE ROOSTER ALL FIXTURES ON SL AND SR CAT PIPE BY 15 DEG.
- SPOTLIGHT PLACEMENT TO BE DETERMINED BY LIGHTING SUPERVISOR.
- CLAY PAKY K20 AND K10 FIXTURES TO BE PATCHED IN "SHAPES" MODE.
- CHROMA Q II 72" TO BE PATCHED IN "RGBA X2" MODE.
- ETC S4 Lustr3 X8 TO BE PATCHED IN "DIRECT" MODE.
- ETC S4 Lustr2 TO BE PATCHED IN "DIRECT STROBE FAN" MODE.
- PLEASE HAVE HOMOGENIZERS IN ALL ETC S4 Lustr2 FIXTURES.
- DISCUSS SAFE PLACEMENT OF MDG HAZER & CO2 TANK WITH LIGHTING DESIGNER AND PRODUCTION ELECTRICIAN.
- NO SUBSTITUTIONS WITHOUT DESIGNER APPROVAL
- PLEASE PROVIDE LX NETWORK ETHERNET AT THE DESIGNER TECH TABLE FOR DRESS/TECH REHEARSALS

**RENT BY JONATHAN LARSON**

PLAYWRIGHT.....	Johnathan Larson
DIRECTOR.....	Noah Racey
SCENIC DESIGNER.....	Savannah Jackson
COSTUME DESIGNER.....	Chloe Martin
SOUND DESIGNER.....	Chandler Webb
LIGHTING DESIGNER.....	Carlos Mauricio
ASSO LIGHTING DESIGNER.....	Ayden Edgar
ASST LIGHTING DESIGNER.....	Katie Craft
DIRECTOR OF PRODUCTION.....	Steven Workman
PRODUCTION MANAGER.....	Matt Grevan
HEAD OF LIGHTING.....	Jackie Fox

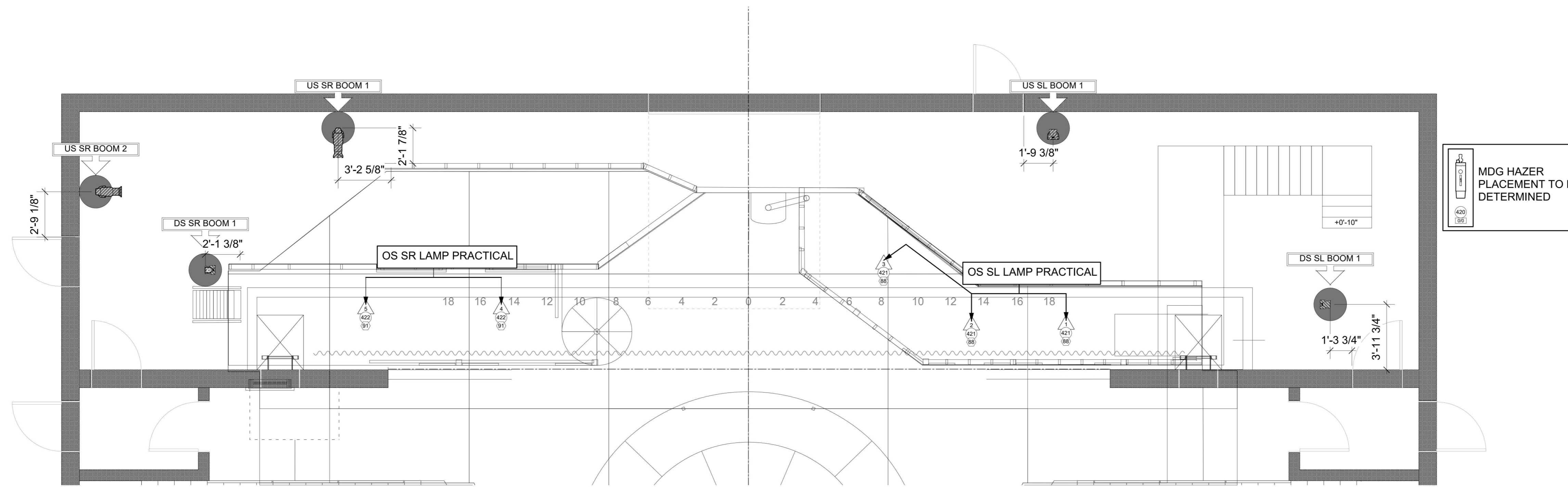
ALL DRAWINGS AND PAPERWORK ASSOCIATED WITH THIS DESIGN REPRESENT VISUAL CONCEPTS AND CONSTRUCTION SUGGESTIONS ONLY. ALL MATERIALS AND CONSTRUCTION METHODS MUST COMPLY WITH THE MOST STRINGENT APPLICABLE NATIONAL AND LOCAL FIRE AND SAFETY CODES. THE DESIGNER IS UNQUALIFIED TO DETERMINE STRUCTURAL APPROPRIATENESS OF THE DESIGN AND WILL NOT BE HELD RESPONSIBLE FOR IMPROPER ENGINEERING, CONSTRUCTION, INSTALLATION, MAINTENANCE, AND/OR USE OF THE DESIGN.

**MAURICIO FOR YOUR EYES ONLY**

**Colorado State University**

**LX Grid Plan Plate 1 of 6**

Scale : 1/4":1' Size : ARCH D Date : 4/9/2026 Drawn By : AME



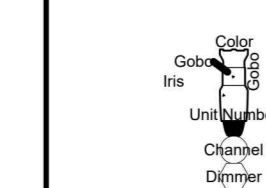
1 Boom and Practical Plan  
Scale: 1/4" = 1'-0"

SYMBOL KEY

- ETC Source 4 50° @ 750W
- ETC Source 4 70° @ 575W
- ETC Source 4 PAR WFL @ 750V
- Chroma-Q Colorforce II 72
- Pendant ST64 Fixture
- MDG Atmosphere
- Rosco Miro Cube 4C

MDG HAZER  
PLACEMENT TO BE  
DETERMINED

LEGEND:



REVISIONS:

NO.	Date	Note
A	11/10/2025	PRELIMINARY PLOT
B	11/15/2025	PRELIMINARY REVISIONS
C	12/8/2025	DESIGNER FINAL DRAWINGS
D	1/23/2026	ASSOCIATE ADJUSTMENTS AND TRANSFER
E	2/10/2026	UPDATES FROM FOCUS
F	4/09/2026	POST-PRODUCTION UPDATES - FINAL

NOTES:

- DIMMER, NETWORKING, AND POWER AS PER LIGHTING SUPERVISOR.
- SEE HOOKUP FOR ACCESSORIES, COLOR, AND FROST.
- PLEASE HAVE EXCESS CUTS OF R119 AT FOCUS.
- PLEASE PROVIDE ALL COLOR, FROST AND TEXTURE AT FOCUS.
- PLEASE ROOSTER ALL FIXTURES ON SL AND SR CAT PIPE BY 15 DEG.
- SPOTLIGHT PLACEMENT TO BE DETERMINED BY LIGHTING SUPERVISOR.
- CLAY PAKY K20 AND K10 FIXTURES TO BE PATCHED IN "SHAPES" MODE.
- CHROMA Q II 72" TO BE PATCHED IN "RGBA X2" MODE.
- ETC S4 LUSTR3 X8 TO BE PATCHED IN "DIRECT" MODE.
- ETC S4 LUSTR2 TO BE PATCHED IN "DIRECT STROBE FAN" MODE.
- PLEASE HAVE HOMOGENIZERS IN ALL ETC S4 LUSTR2 FIXTURES.
- DISCUSS SAFE PLACEMENT OF MDG HAZER & CO2 TANK WITH LIGHTING DESIGNER AND PRODUCTION ELECTRICIAN.
- NO SUBSTITUTIONS WITHOUT DESIGNER APPROVAL
- PLEASE PROVIDE LX NETWORK ETHERNET AT THE DESIGNER TECH TABLE FOR DRESS/TECH REHEARSALS



PLAYWRIGHT.....	Johnathan Larson
DIRECTOR.....	Noah Racey
SCENIC DESIGNER.....	Savannah Jackson
COSTUME DESIGNER.....	Chloe Martin
SOUND DESIGNER.....	Chandler Webb
LIGHTING DESIGNER.....	Carlos Mauricio
ASSO LIGHTING DESIGNER.....	Ayden Edgar
ASST LIGHTING DESIGNER.....	Katie Craft
DIRECTOR OF PRODUCTION.....	Steven Workman
PRODUCTION MANAGER.....	Matt Grevan
HEAD OF LIGHTING.....	Jackie Fox

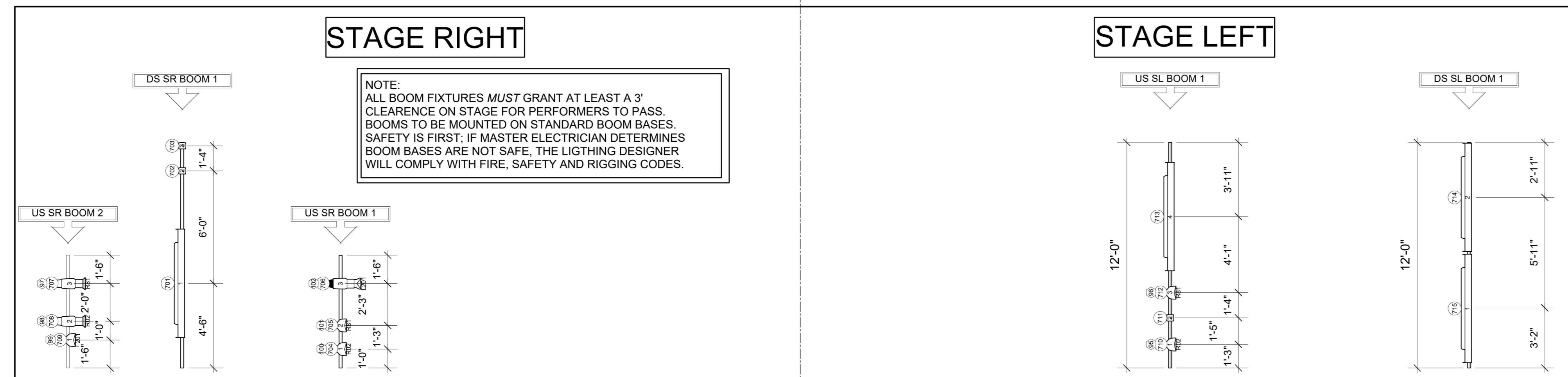
ALL DRAWINGS AND PAPERWORK ASSOCIATED WITH THIS DESIGN REPRESENT VISUAL CONCEPTS AND CONSTRUCTION SUGGESTIONS ONLY. ALL MATERIALS AND CONSTRUCTION METHODS MUST COMPLY WITH THE MOST STRINGENT APPLICABLE NATIONAL AND LOCAL FIRE AND SAFETY CODES. THE DESIGNER IS UNQUALIFIED TO DETERMINE STRUCTURAL APPROPRIATENESS OF THE DESIGN AND WILL NOT BE HELD RESPONSIBLE FOR IMPROPER ENGINEERING, CONSTRUCTION, INSTALLATION, MAINTENANCE, AND/OR USE OF THE DESIGN.



Colorado State University

Boom Elevations Plate 5 of 6

Scale : 1/4":1' Size : ARCH D Date : 4/9/2026 Drawn By : AME

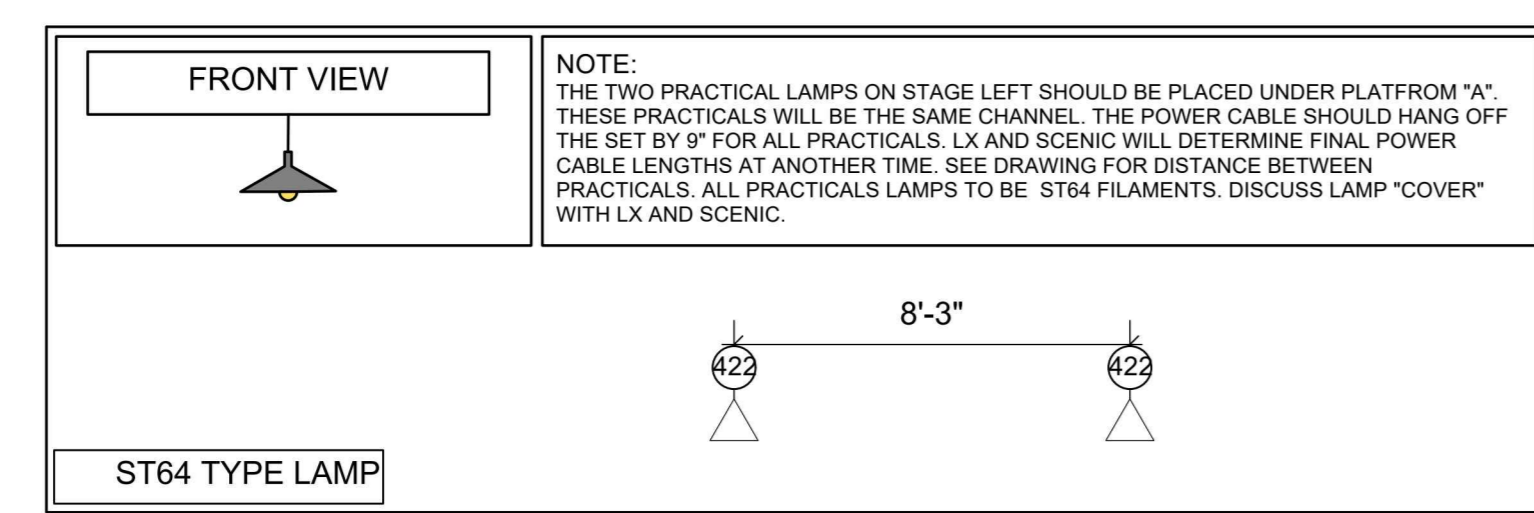


STAGE RIGHT

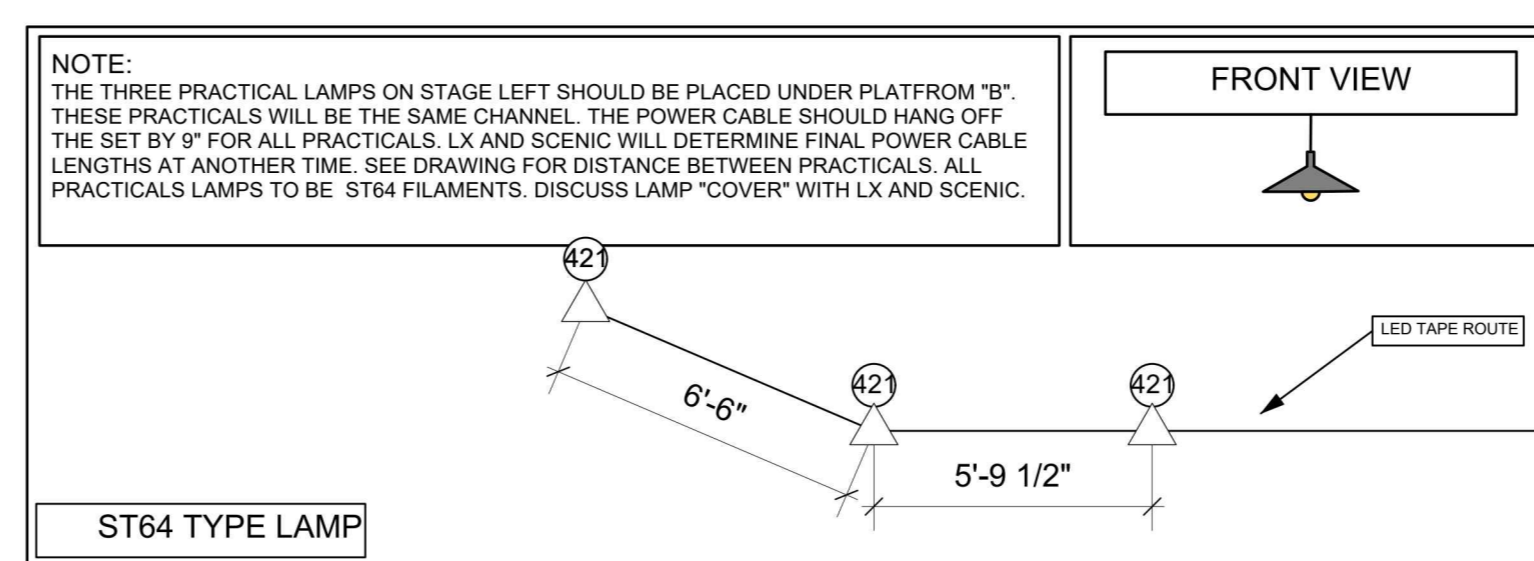
STAGE LEFT

NOTE:  
ALL BOOM FIXTURES MUST GRANT AT LEAST A 3' CLEARANCE ON STAGE FOR PERFORMERS TO PASS. BOOMS TO BE MOUNTED ON STANDARD BOOM BASES. SAFETY IS FIRST. IF MASTER ELECTRICIAN DETERMINES BOOM BASES ARE NOT SAFE, THE LIGHTING DESIGNER WILL COMPLY WITH FIRE, SAFETY AND RIGGING CODES.

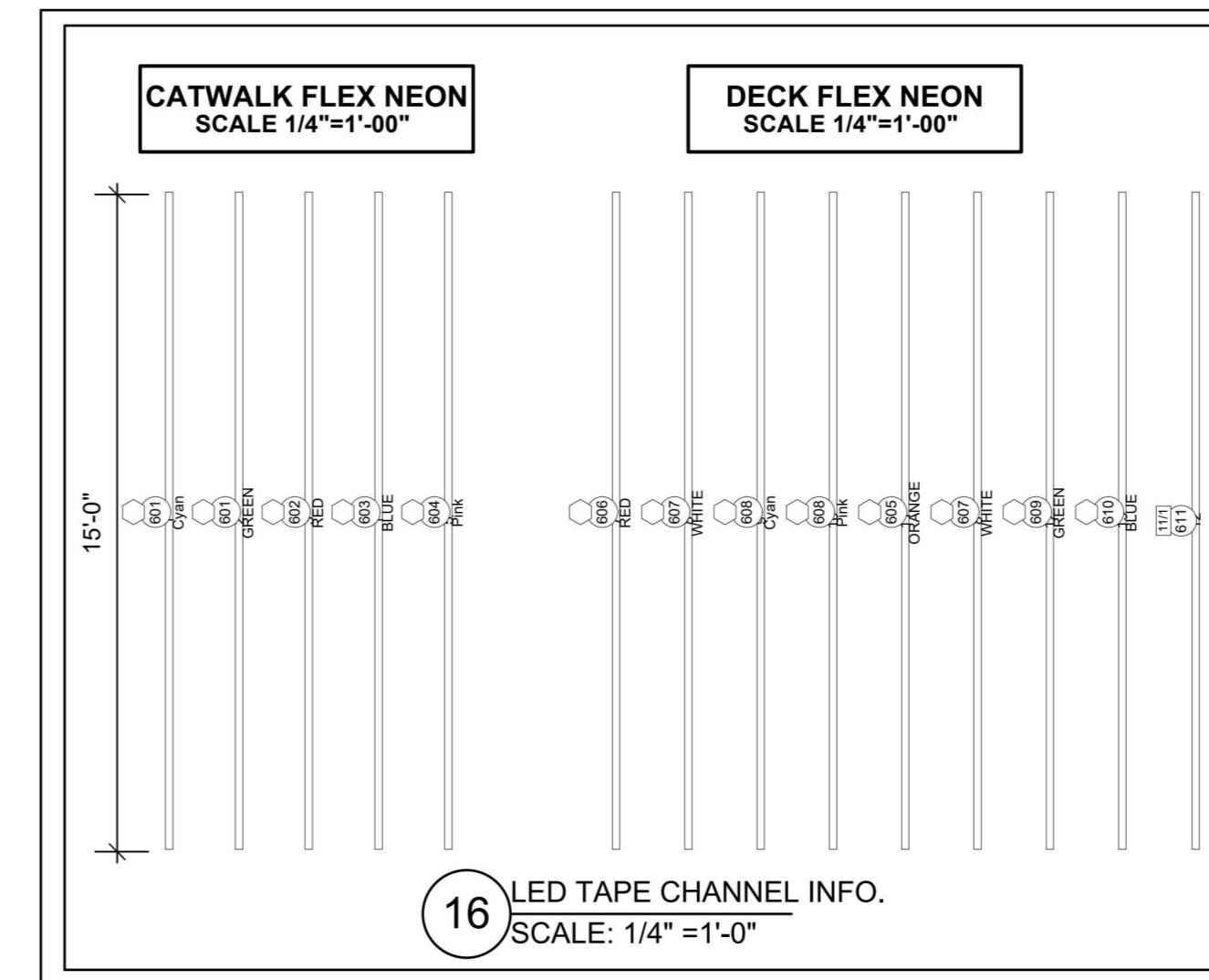
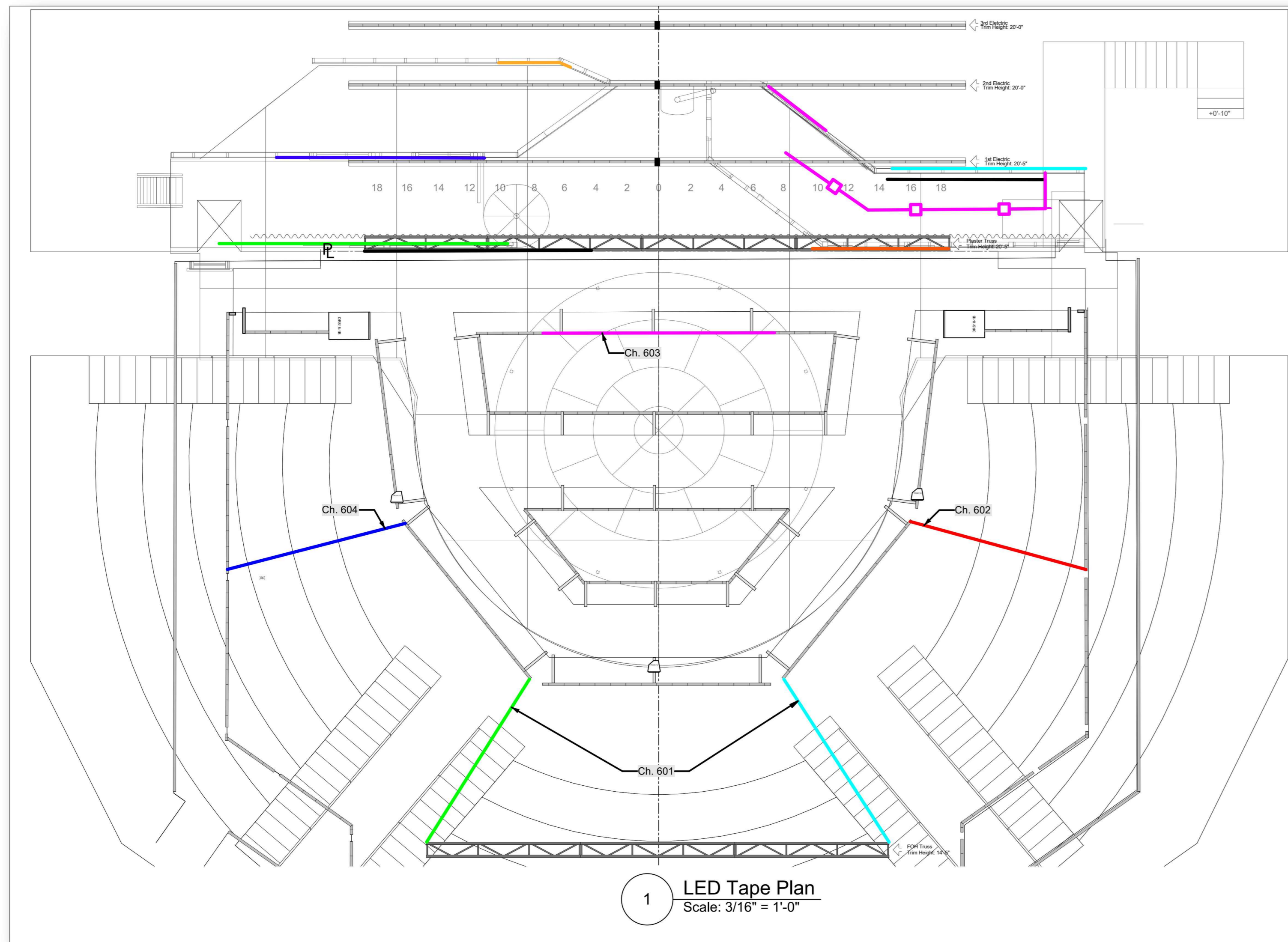
2 Boom Elevations  
Scale: 1/4" = 1'-0"



3 Ch. 422 Plan  
Scale: 1/4" = 1'-0"



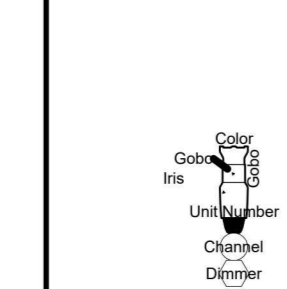
4 Ch. 421 Plan  
Scale: 1/4" = 1'-0"



SYMBOL KEY

- Flex Neon - Blue
- Flex Neon - Cyan
- Flex Neon - Green
- Flex Neon - Red
- Flex Neon - Orange
- Flex Neon - White
- Flex Neon - Pink
- LED Tape - Pixel + RGB Control

LEGEND:



REVISIONS:

NO.	Date	Note
A	11/10/2025	PRELIMINARY PLOT
B	11/15/2025	PRELIMINARY REVISIONS
C	12/8/2025	DESIGNER FINAL DRAWINGS
D	1/23/2026	ASSOCIATE ADJUSTMENTS AND TRANSFER
E	2/10/2026	UPDATES FROM FOCUS
F	4/09/2026	POST-PRODUCTION UPDATES - FINAL

NOTES:

- DIMMER, NETWORKING, AND POWER AS PER LIGHTING SUPERVISOR.
- SEE HOOKUP FOR ACCESSORIES, COLOR, AND FROST.
- PLEASE HAVE EXCESS CUTS OF R119 AT FOCUS.
- PLEASE PROVIDE ALL COLOR, FROST AND TEXTURE AT FOCUS.
- PLEASE ROOSTER ALL FIXTURES ON SL AND SR CAT PIPE BY 15 DEG.
- SPOTLIGHT PLACEMENT TO BE DETERMINED BY LIGHTING SUPERVISOR.
- CLAY PAKY K20 AND K10 FIXTURES TO BE PATCHED IN "SHAPES" MODE.
- CHROMA Q II 72" TO BE PATCHED IN "RGBA X2" MODE.
- ETC S4 LUSTR3 X8 TO BE PATCHED IN "DIRECT" MODE.
- ETC S4 LUSTR2 TO BE PATCHED IN "DIRECT STROBE FAN" MODE.
- PLEASE HAVE HOMOGENIZERS IN ALL ETC S4 LUSTR2 FIXTURES.
- DISCUSS SAFE PLACEMENT OF MDG HAZER & CO2 TANK WITH LIGHTING DESIGNER AND PRODUCTION ELECTRICIAN.
- NO SUBSTITUTIONS WITHOUT DESIGNER APPROVAL
- PLEASE PROVIDE LX NETWORK ETHERNET AT THE DESIGNER TECH TABLE FOR DRESS/TECH REHEARSALS



PLAYWRIGHT.....	Johnathan Larson
DIRECTOR.....	Noah Racey
SCENIC DESIGNER.....	Savannah Jackson
COSTUME DESIGNER.....	Chloe Martin
SOUND DESIGNER.....	Chandler Webb
LIGHTING DESIGNER.....	Carlos Mauricio
ASSO LIGHTING DESIGNER.....	Ayden Edgar
ASST LIGHTING DESIGNER.....	Katie Craft
DIRECTOR OF PRODUCTION.....	Steven Workman
PRODUCTION MANAGER.....	Matt Grevan
HEAD OF LIGHTING.....	Jackie Fox

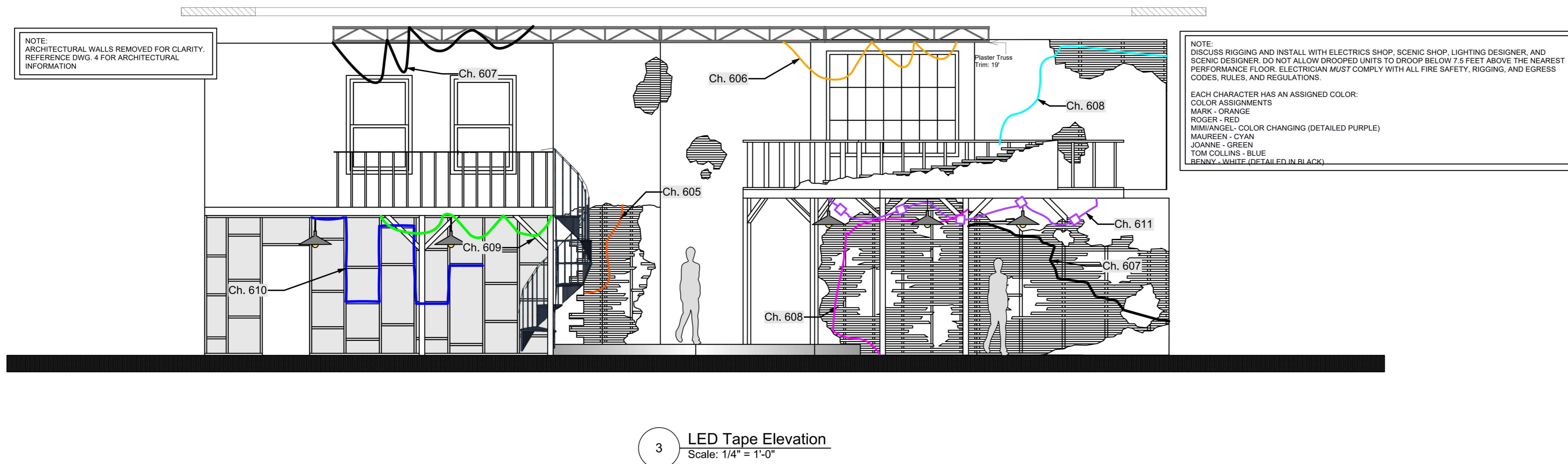
ALL DRAWINGS AND PAPERWORK ASSOCIATED WITH THIS DESIGN REPRESENT VISUAL CONCEPTS AND CONSTRUCTION SUGGESTIONS ONLY. ALL MATERIALS AND CONSTRUCTION METHODS MUST COMPLY WITH THE MOST STRINGENT APPLICABLE NATIONAL AND LOCAL FIRE AND SAFETY CODES. THE DESIGNER IS UNQUALIFIED TO DETERMINE STRUCTURAL APPROPRIATENESS OF THE DESIGN AND WILL NOT BE HELD RESPONSIBLE FOR IMPROPER ENGINEERING, CONSTRUCTION, INSTALLATION, MAINTENANCE, AND/OR USE OF THE DESIGN.



Colorado State University

LED Tape Plate 6 of 6

Scale : 1/4":1' Size : ARCH D Date : 4/9/2026 Drawn By : AME



NOTE:  
ARCHITECTURAL WALLS REMOVED FOR CLARITY.  
REFERENCE DWG. 4 FOR ARCHITECTURAL INFORMATION

NOTE:  
DISCUSS RIGGING AND INSTALL WITH ELECTRICS SHOP, SCENIC SHOP, LIGHTING DESIGNER, AND SCENIC DESIGNER. DO NOT ALLOW DROOPED UNITS TO DROOP BELOW 7.5 FEET ABOVE THE NEAREST PERFORMANCE FLOOR. ELECTRICIAN MUST COMPLY WITH ALL FIRE SAFETY, RIGGING, AND EGRESS CODES, RULES, AND REGULATIONS.

EACH CHARACTER HAS AN ASSIGNED COLOR:  
COLOR ASSIGNMENTS  
ROGER - RED  
MARK - ORANGE  
MIMIANGEL - COLOR CHANGING (DETAILED PURPLE)  
MAUREEN - CYAN  
JOJANNE - GREEN  
TOM COLLINS - BLUE  
BENNY - WHITE (DETAILED IN BLACK)